

wrong<sup>2</sup>emble

# THE SELFISH GIANT



TOUR PACK 2018

OSCAR WILDE'S CLASSIC REIMAGINED FOR AGES 3-7

THE  
VISION  
FARMLEY



Supported using public funding by  
**ARTS COUNCIL  
ENGLAND**

## CONTENTS

- **Page 2:** Synopsis & Design
- **Page 3:** Touring Details & Technical Specification
- **Page 4:** Technical Specification & Prices
- **Page 5 & 6:** About Wrongsemble & Marketing & Promotion

# The Selfish Giant

by Oscar Wilde

Co-commissioned by Barnsley Civic and Stockton ARC. Supported using public funding by the National Lottery through Arts Council England.

In a very cold, grey town, not too far from here, hidden behind a crumbling wall and a thousand signs which say 'KEEP OUT', lives... The Selfish Giant.

So selfish he shut away the garden where the children used to play and cursed the town to never ending winter.

Or so the story goes...

But one curious child wants to find out the truth about what really lies behind the wall.

Oscar Wilde's classic tale is reimagined for the stage in this magical adventure for the whole family.

*"Clever design, exemplary storytelling, and raucous energy...a step above most family entertainment."*  
Reviews Hub (about Wrongsemble)

A strong visual identity is really important to Wrongsemble – we want theatre to be a magical and accessible experience. We have created a piece exploring outside space for indoor

performance – and something which can exist in a variety of different venues and spaces (e.g. Civic Assembly Room and the ARC Theatre/Studio). Please take a look at some of our production images below.

**Photo Credit: Anthony Robling  
Antony Jones**



# The Selfish Giant

by Oscar Wilde

## ABOUT THE PRODUCTION

### Running time:

Performances last approx. **50 mins (no interval)**

+ optional post-show 'Stay and Play' session onstage with cast (approx. 15mins)

### Touring details:

Available for booking from 1 August 2018 throughout Autumn 18

This show is also available with an adapted version for Christmas 2018 bookings

### Technical staff required:

1 in-house technician to assist with get-in, focus, plot, get-out, and some on stage cues (e.g. manual snow drop at end of show) or operate SFX/LX.

**Technical Requirements:** *Tech Rider available separately on request*

### **Essential:**

1 x Technician (get-in, show, and get-out – FULL call)

Venue configuration: End on

Get-in: Min 4 hours before half to include tech run

Get-out: 2 hours

Parking space for one LWB Van

2 x Lockable dressing rooms or equivalent

Mixing desk with jack to mini-jack cables and power cable

Access to in-house PA system

Access to 3 x onstage power (13 or 16AMP)

Four-way 13 AMP power source at operating point

2 x sets of cans (one at operating point, one at stage)

Birdie or small working light behind set piece on stage

8 x stage weights

Appropriate hard or soft masking Stage Left and Right to create wings

Full black (hard or soft) as backdrop

2 x Onstage monitors/ fall-back speakers Stage left and right

Access to hoover / dustpan and brush

Access to Tallescope

### **Performance Space:**

Min. width: 5m

Min. depth (from front of stage). 4m

Min height. 2.5m

**Rig:** 1 bar for snow-drop required.

### **Sound:**

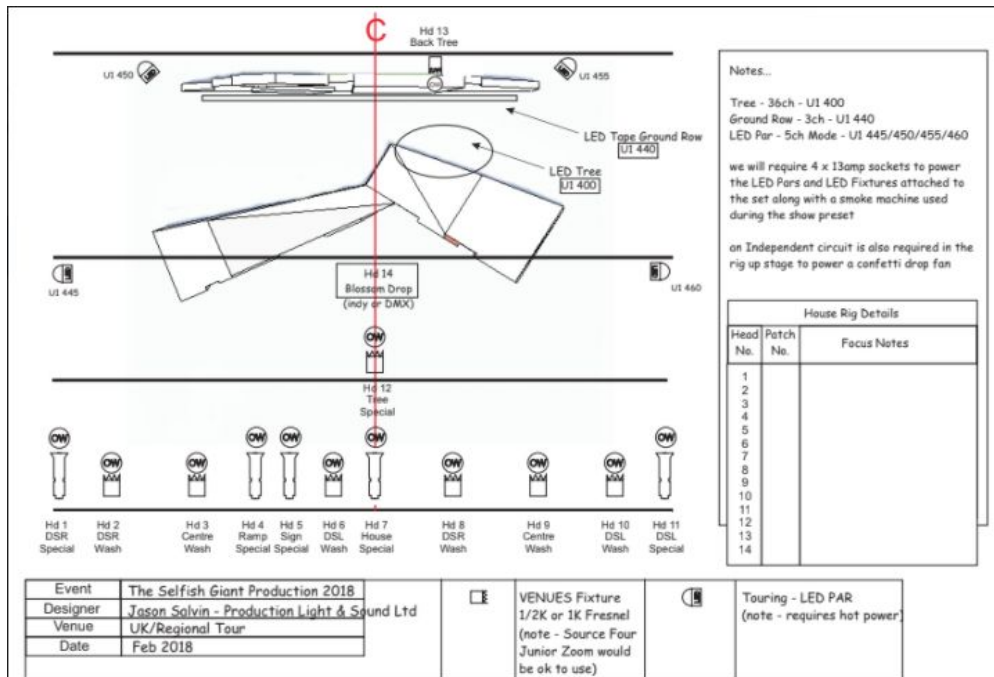
We are touring a laptop with QLAB or equivalent so will require a mini-jack into your P.A. system. The sound should emanate from the performance area.

# The Selfish Giant

by Oscar Wilde

## LX Pre-rig:

We are touring a laptop with QLAB or equivalent. A full pre-rig is required. Some specials will be supplied by the company. We are able to respond/adapt to technical capacity of tour venues in most circumstances. A finalised plan is here, or available separately on request.



## Staffing from Wrongsemble:

There are two performers, and one stage manager who is able to operate lighting and sound.

## We provide:

Dedicated marketing support from Wrongsemble.

Up to 500 over-printable A5 colour flyers and 15 colour posters (please request sizing A0/A1/A3/A4)

Trailer for use on digital platforms and social media

Images and production photos for use within venue brochures or broader usage including digital plus support from the Wrongsemble team.

## Prices [1 or 2 shows per day]:

**Less than 70 Miles from Leeds (commutable): £725 (no VAT)** - £600 for additional days.

**All other regions: £895 (no VAT)** - £700 for additional days

Locations exceedingly far from the company's base in Leeds may incur a fuel surplus fee. Please note that additional supplements may apply if your venue makes a compulsory contractual costs to Wrongsemble (e.g.credit card/box office; get-in/out; marketing/brochure contributions).

# The Selfish Giant

by Oscar Wilde

## About Wrongsemble

Wrongsemble are a Yorkshire based theatre company making exciting family theatre for all ages. All of our company associates have extensive experience facilitating and creating work with and for families, young people and communities.

Wrongsemble's previous productions 'Three', 'Billy Shakes: Wonder Boy!', 'The Shadowmakers' and 'Peter Pan in the Park' have toured to hundreds of venues and sites across the UK - always met with overwhelming responses from audiences. 'The Selfish Giant' promises to be one of our biggest and most beautiful shows to date...

## Creative Learning Opportunities:

This show is supported with a Teacher's Pack and a range of Educational opportunities available by pre-arrangement with Wrongsemble. All shows have a post-show 'Stay and Play' on stage session.

## **Creatives Contact details**

Elvi Piper- *Artistic Director*  
[info@wrongsemble.com](mailto:info@wrongsemble.com)  
07883 487887

Chemeana Lacey  
Kirsty Pennycook –  
*Producers/Tour Bookers*  
[info@wrongsemble.com](mailto:info@wrongsemble.com)  
07495 506443

Antony Jones- *Designer*  
[info@wrongsemble.com](mailto:info@wrongsemble.com)  
07969 006564



**Credit: Anthony Robling Photography**  
'The Selfish Giant' by Wrongsemble

---

## **Marketing and Promotion Information**

### Selling points/USPs:

- Oscar Wilde's fabled classic *The Selfish Giant* is a tale many people have heard before, offering a familiarity to less regular theatre goers.
- *The Selfish Giant* is still in development, and new venues who would like to book this production will be considered within this phase.
- The piece will be written and devised to engage with children and adults alike. A true family experience spanning generations.

# The Selfish Giant

by Oscar Wilde

- The show will run for no more than 60 minutes with pre-show and no interval.
- This piece will be highly visual, with a tactile set that will allow the audience to experience the show after the performance first hand in a 'Stay and Play'—post-show experience.
- All music will be original.
- The show will be created to encourage both family and school audiences.
- Marketing copy available for all word limits.
- Company available for press and interviews on request.

## Social media/website

We actively update our social media channels and website, and will regularly re-tweet and re-post information from venues and festival bookers. Links to our trailer and images can be seen on our website when available (high-resolution copies of these can be provided for venues/bookers if required).

Website: [www.wrongsemble.com](http://www.wrongsemble.com)

Twitter: @wrongsemble #theselfishgiant

Facebook:

<https://www.facebook.com/pages/Wrong%C6%A7emble/178595228863132>

Youtube Trailer: [https://www.youtube.com/watch?v=\\_ShZjnaqaeU](https://www.youtube.com/watch?v=_ShZjnaqaeU)



Credit: Anthony Robling Photography  
'The Selfish Giant' by Wrongsemble